

Air Inlets Catalogue

Table Of Contents

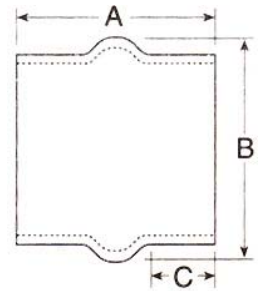
Air Inlet Rubber Hump Hoses.	Page 1	'Vortex' Air Inlet Rams.	Page 5
Air Inlet Rubber Reducer Hump Hoses.	Page 1	Moulded Plastic Air Inlet Air Rams.	Page 5
Air Inlet Rubber Reducing Sleeve.	Page 2	Moulded Plastic Air Inlet Hoods.	Page 5
Air Inlet Rubber 90° Elbows.	Page 2	Air Inlet Pre-Cleaners.	Page 6
Air Inlet Rubber 90° Reducing Elbows.	Page 3	Air Inlet Pre-Cleaner Service Parts.	Page 6
Air Inlet Rubber 45° Elbows.	Page 3	Air Cleaner Mounting Bands.	Page 7
Air Inlet S/Steel T-Bolt Clamps.	Page 4	Air Inlet Accessories.	Page 7
Air Inlet Aluminium Tubing.	Page 4		

Our Locations

Truck Bits Australia PTY LTD
14-20 Knowles RD
Dandenong South 3175
Victoria, Australia.
TEL: (0011 063) (03) 97028788
FAX: (0011 063) (03) 9702 8045

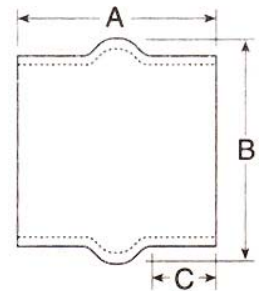
AIR INLET RUBBER HUMP HOSES.

Part No.	I.D.	A.	B.	C.
HH300	3"	5.25"	4.5"	2"
HH350	3.5"	5.25"	5"	2"
HH400	4"	5.25"	5.37"	2"
HH450	4.5"	5.25"	5.87"	1.75"
HH500	5"	6"	6.12"	2.25"
HH550	5.5"	6"	7"	2.25"
HH600	6"	7"	7.5"	2.75"
HH700	7"	7"	8.5"	2.5"
HH800	8"	5"	9.5"	1.5"



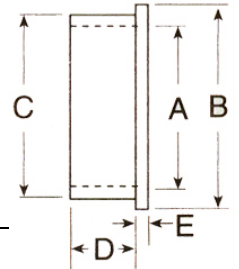
AIR INLET RUBBER REDUCER HUMP HOSES.

Part No.	I.D.	A.	B.	C.	D.
HHR250300	3" x 2.5"	4.5"	4.5"	1.5"	1.5"
HHR300350	3.5" x 3"	6"	5"	2.31"	3"
HHR300400	4" x 3"	6"	5.25"	2"	3"
HHR350400	4" x 3.5"	5"	5.5"	2"	2"
HHR400500	5" x 4"	6"	6.25"	2"	3"
HHR400550	5.5" x 4"	6"	6.75"	2"	3"
HHR500550	5.5" x 5"	6"	6.25"	2.25"	3"
HHR500600	6" x 5"	6"	7.5"	2.12"	3"
HHR550600	6" x 5.5"	6"	7.5"	2.12"	3"
HHR550700	7" x 5.5"	6"	8.5"	2.25"	3.5"
HHR600700	7" x 6"	6"	8.5"	1.75"	3"
HHR600800	8" x 6"	6"	9.5"	2"	3"
HHR700800	8" x 7"	6"	9.5"	1.87"	3"

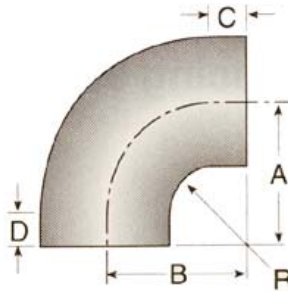


AIR INLET RUBBER REDUCING SLEEVE.

Part No	A.	B.	C.	D.	E.
RRS500550	5"	6"	5.5"	1.5"	.25"
RRS500600	5"	6.5"	6"	1.5"	.5"
RRS550600	5.5"	6.5"	6"	1.5"	.25"
RRS600700	6"	7.5"	7"	1.5"	.25"
RRS700800	7"	8.5"	8"	1.5"	.25"

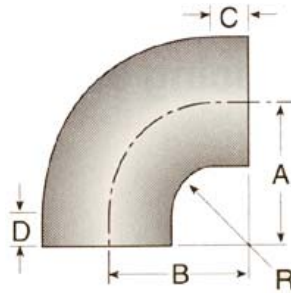


AIR INLET RUBBER 90° ELBOWS.



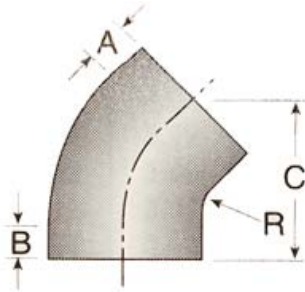
Part No.	I.D.	A.	B.	C.	D.	R.
RE90200	2"	5.5"	5.75"	-	-	1.75"
RE90225	2.25"	3.75"	3.75"	-	-	1.75"
RE90250	2.5"	4.25"	4.25"	-	-	1.75"
RE90300	3"	5.25"	5.25"	1.75"	1.5"	2"
RE90350	3.5"	5.5"	5.5"	1.75"	1.5"	2"
RE90400	4"	5.75"	5.75"	1.75"	1.5"	2"
RE90450	4.5"	6"	6"	1.75"	1.5"	1.75"
RE90500	5"	6.12"	6.12"	1.75"	1.62"	1.75"
RE90550	5.5"	6.5"	6.5"	1.75"	1.75"	1.75"
RE90600	6"	7"	7"	2.25"	2"	1.75"
RE90700	7"	7.56"	7.56"	2.25"	2"	1.75"
RE90800	8"	8.5"	8.5"	2"	2.25"	2.12"

AIR INLET RUBBER 90 DEGREES REDUCING ELBOWS.



Part No.	A.	B.
RRE903040	4"	3"
RRE904050	5"	4"
RRE905060	5"	6"
RRE905560	5.5"	6"

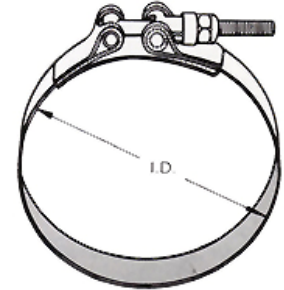
AIR INLET RUBBER 45° ELBOWS.



Part No.	I.D.	A.	B.	C.	R.
RE45200	2"	1.5"	1.5"	4.25"	2"
RE45225	2.25"	1.5"	1.5"	3.5"	2"
RE45250	2.5"	1.5"	1.5"	4.5"	2"
RE45300	3"	1.5"	1.5"	5.5"	2"
RE45350	3.5"	1.5"	1.5"	5.5"	2"
RE45400	4"	1.5"	1.5"	5.5"	2"
RE45450	4.5"	1.5"	1.5"	5.75"	1.75"
RE45500	5"	1.62"	1.62"	5.25"	1.75"
RE45550	5.5"	1.75"	1.75"	6.25"	1.75"
RE45600	6"	2"	2"	6.5"	1.75"
RE45700	7"	2.25"	2.25"	8"	1.75"
RE45800	8"	2.25"	2.25"	8.25"	2.12"

AIR INLET S/STEEL T-BOLT CLAMPS.

Part No.	Size	Nominal Diameter.
HC200TB	2"	2.5"
HC225TB	2.25"	2.75"
HC250TB	2.5"	3"
HC275TB	2.75"	3.25"
HC300TB	3"	3.5"
HC350TB	3.5"	4"
HC400TB	4"	4.5"
HC450TB	4.5"	5"
HC500TB	5"	5.5"
HC550TB	5.5"	6"
HC600TB	6"	6.5"
HC700TB	7"	7.62"
HC800TB	8"	8.62"



AIR INLET ALUMINIUM TUBING.

PART NO.	SIZE
AT300*	3"
AT400	4"
AT500	5"
AT600	6"
AT700	7"
AT800	8"



***Cut to length required**

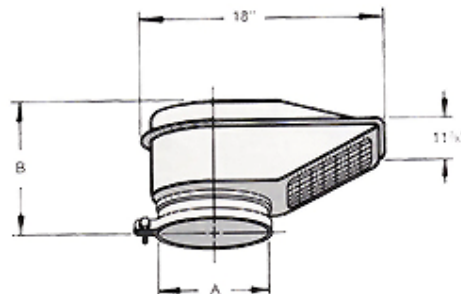
'VORTEX' AIR INLET RAMS.

PART NO

SIZE

CFA40CP
CFA50CP
CFA60CP
CFA70CP

4" Chrome Plated
5" Chrome Plated
6" Chrome Plated
7" Chrome Plated



MOULDED PLASTIC AIR INLET AIR RAMS.

PART NO

SIZE

H008149
H008154
H008150
H001733
H001725

3"
4"
5"
6"
7"



X004995

6" or 7" Low Profile with Reducing Sleeve.



H001725
H001661
H001733

7" with Louvers on Side.
8" with Louvers on Side.
6" with Louvers on Side.



MOULDED PLASTIC AIR INLET HOODS.

PART NO

SIZE

H008207
H008208
H008209
H008210
H000469
H000604
H000606
H000607

2"
2.5"
3"
4"
5"
5.5"
6"
7"



AIR INLET PRE-CLEANERS.

PART NUMBER	SIZE	OUTSIDE DIAMETER
H002042	1.75"	5.5"
H002040	2"	5.5"
H001823	2"	7.25"
H001250	2.25"	5.5"
H001251	2.5"	7.25"
H001249	3"	7.25"
H000820	3"	10.5"
H000821	3.75"	10.5"
H000858	4"	10.5"
H002045	4"	12"
H002044	4.5"	12"
H002043	5"	12"



AIR INLET PRE-CLEANER SERVICE PARTS.



Plastic Bowl

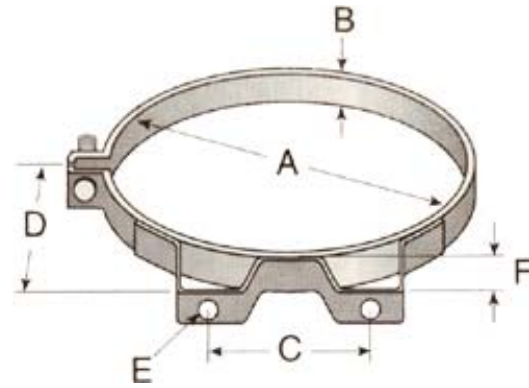


Cover Assembly

PART NUMBER	DESCRIPTION	OUTSIDE DIAMETER
PO20115	Plastic Bowl	5.5"
PO20227	Plastic Bowl	7.25"
PO16330	Plastic Bowl	10.5"
PO20344	Plastic Bowl	12"
PO20116	Cover Assembly	5.5"
PO20648	Cover Assembly	7.25"
PO16548	Cover Assembly	10.5"
PO20345	Cover Assembly	12"

AIR CLEANER MOUNTING BANDS.

PART NO	SIZE
P900767	4"
P004055	4.38"
P002348	5.25"
P002351	6"
P007191	6.5"
P900345	7"
P004307	8"
P004073	9"
P004076	10"
H000349	12"
H000350	14"
H000351	16"



AIR INLET ACCESSORIES.

PART NO	DESCRIPTION
P522958	Rubber Vacuator Valve 1.5"
P103198	Rubber Vacuator Valve 3"
P102144	Wing Nut 7/16" u.n.f.
X002251	Air Cleaner Element Service Replacement Indicator 20"
X002252	Air Cleaner Element Service Replacement Indicator 25"
X002351	Air Cleaner Element Service Kit 20"

